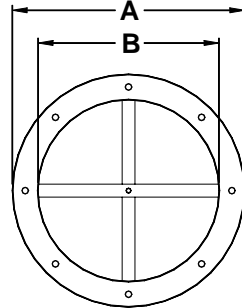


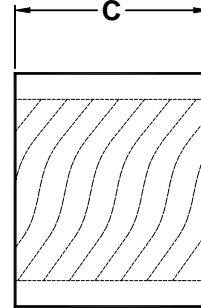


2426-135 FGR-IL

## Inline Spiral Silencer



FACE



SIDE

Dimensions				
A = Dia. O.D.	B = Dia. I.D.	C = Length	Face Flow I.D.	Net Weight
28 in.	24 in.	26 in.	24 in.	80 lbs.

### DYNAMIC INSERTION LOSS

Octave Bands	1	2	3	4	5	6	7	8
Center Freq. Hz	63	125	250	500	1000	2000	4000	8000
Face Velocity	Dynamic Insertion Loss in Decibels							
-4000	18	20	16	25	34	47	50	55
-3000	17	20	16	25	33	46	50	55
-2000	17	20	15	24	33	46	49	54
-1000	17	19	15	24	33	46	49	54
+1000	17	19	15	24	33	45	49	54
+2000	17	19	15	24	32	45	49	54
+3000	17	19	15	24	32	45	49	54
+4000	17	18	15	24	32	45	49	54

### AERODYNAMIC PERFORMANCE DATA

Static Pressure Loss in Inches of H <sub>2</sub> O										
	.05	.10	.15	.20	.25	.30	.40	.50	.75	1.00
Airflow in CFM	1870	4840	6005	6940	7775	8515	9765	11000	13465	15550

Tel: (909) 796-6200



Fax: (909) 796-6223



**2426-135 FGR-IL**

**SELF GENERATED SOUND RATINGS**

Forward Flow								
Octave Bands	1	2	3	4	5	6	7	8
Center Freq. Hz	63	125	250	500	1000	2000	4000	8000
Face Velocity	Generated Sound in Sound Power Level (Lw) (dB re 10 <sup>-12</sup> Watts)							
1000	(52)	(41)	(31)	(22)	(18)	(19)	(22)	(25)
2000	(53)	(42)	(41)	40	40	41	(25)	(27)
3000	54	44	43	42	42	43	33	35

Reverse Flow								
Octave Bands	1	2	3	4	5	6	7	8
Center Freq. Hz	63	125	250	500	1000	2000	4000	8000
Face Velocity	Generated Sound in Sound Power Level (Lw) (dB re 10 <sup>-12</sup> Watts)							
1000	(52)	(41)	(31)	(22)	(18)	(19)	(22)	(25)
2000	(53)	(42)	(41)	39	40	40	(25)	(27)
3000	53	44	42	42	42	43	33	35

**NOTE:** Sound power levels in parentheses have reached ambient levels in the test facilities test room or are determined by instrument limitations. Actual levels are less than or equal to levels indicated.

The above insertion loss values and self generated sound levels are extrapolated from actual test data from an independent testing facility per ASTM E477 "Standard Methods of Testing Duct Liner Materials and Prefabricated Silencers for Acoustical and Airflow Performance". Test reports available upon request.