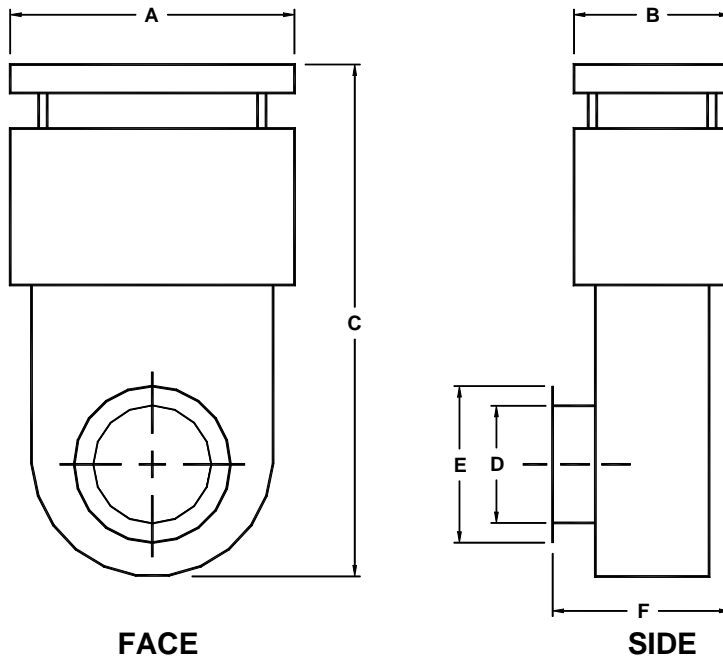




VA - TEFC

Inline Spiral Silencer



*This information is necessary if holes are to be pre-punched. If these specifications are not furnished, mounting flanges must be drilled on the job by installer.

Silencer construction is Aluminum.
Adapter fitting is steel.
Both have powder coat finish.

Each unit is complete with two Oxel® square attenuating spirals, mounting gasket, adapter fitting, and inlet screen.

We will identify silencers by area, fan, or motor number only if it's requested.

MODEL NUMBER

Dim	VA 77-2S	VA 88-2S	VA 99-2S	VA 1010-2S	VA 1212-2S	VA 1414-2S	VA 1420-2S	VA 1624-2S	VA 1826-2S
A	20"	22"	24"	26"	30"	34"	34"	38"	42"
B	11"	12"	13"	14"	16"	18"	18"	20"	22"
C	36"	38"	40"	42"	44"	52"	58"	64"	72"
INLET SIZE (USER SPECIFIED)	D								
O.D. OF FLANGE (USER SPECIFIED)	E								
F	12½"	13½"	14½"	15½"	17½"	19½"	19½"	24½"	28"
*SIZE OF BOLT CIRCLE									
NUMBER & SIZE OF MOUNTING BOLTS									
*LOCATION OF 1 ST BOLT (0 DEG AT 3 O'CLOCK, ETC.)									

Tel: (909) 796-6200



Fax: (909) 796-6223

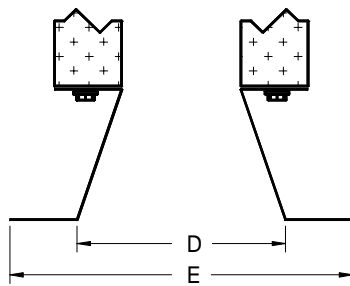


VA - TEFC

ATTENUATION AND AIR FLOW

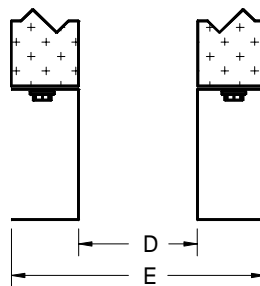
Model number	INSERTION LOSS AT 3FT.							AIR FLOW CFM		APPROX. WT. IN LBS.	
	B.B. dBA	125 dB	250 dB	500 dB	1000 dB	2000 dB	4000 dB	@ 0.50"	@ 0.75"	SILENCER	ADAPTER
VA 77-2S	45	31	30	28	37	48	63	1420	1650	34	12
VA 88-2S	44	35	33	45	42	46	63	2600	2900	42	14
VA 99-2S	43	29	29	45	42	47	63	2900	3350	49	16
VA 1010-2S	46	29	32	39	45	51	63	4900	5600	54	18
VA 1212-2S	46	29	38	37	43	53	63	6500	7400	68	20
VA 1414-2S	46	28	35	34	36	49	63	7900	8200	85	24
VA 1420-2S	47	28	32	41	39	47	63	9400	10300	91	24
VA 1624-2S	52	31	34	38	47	49	62	12000	13800	126	50
VA 1826-2S	44	28	29	34	36	46	62	15000	16100	176	80

Above reading were taken during in-plant tests of Silencers. Air flow and pressure drop tests follow the joint Standard **ASHRAE 51-75** and **AMCA 210-74**. Attenuation tests made in large reverberant room, reading high level noise at selected frequencies, "open speaker", and "attenuator in place", using **GENRAD 1565-A** And **1933** meters, calibrated with **1562-A** calibrator before test. Broad band noise generated by **GENRAD type 1390-A** noise source.



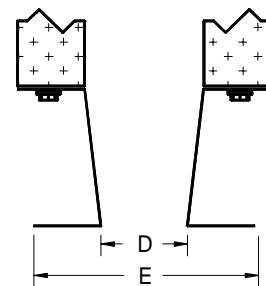
TYPE 1 ADAPTER

TAPER CONNECTS SILENCER TO LARGER SIZE INLET ON MOTOR



TYPE 2 ADAPTER

ADAPTER IS STRAIGHT – NO TAPER



TYPE 3 ADAPTER

ADAPTS LARGER SIZE SILENCER TO SMALLER AIR INLET ON MOTOR

NOTE: Special adapters can be furnished for your requirements if you will supply a sketch. Adapters have internal acoustical treatment. Adapter types 1,2, and 3 will be punched to match the mounting flange of your equipment if you specify numbers and size of bolt holes and diameter of bolt circle. In ordering vertical silencers, VA series, specify location of first bolt, i.e. 0 degrees (3 o'clock) etc.